

QualityForkExtensions made by VETTER

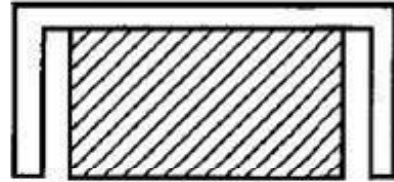


The ideal solution for lifting loads which are much longer than the existing fork.

Designed according to ISO 13284 and CE guideline „Machines“ 89/392/EEU-IIA!



Available versions

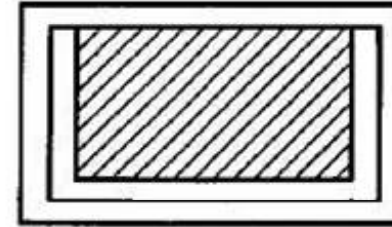


a) Open section

Open version

Welded structure with an open lower side

Solid and cost-effective solution for the transport of loads which are distributed over the whole length of the extension



b) Closed section

Closed version

Welded and extra solid box design with a closed lower side

Designed to lift also loads which have their centre of gravity outside the length of the basic fork

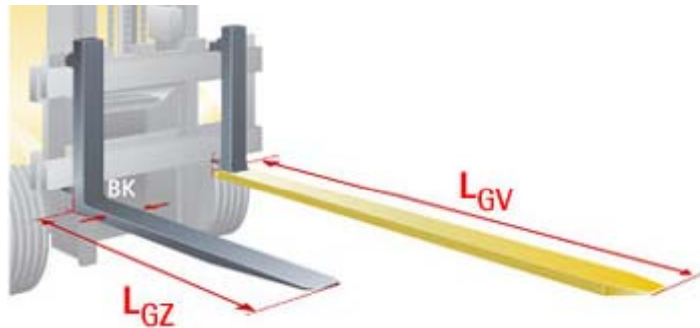


Demands of ISO 13284

Please observe:

The existing fork must support at least 60 % of the fork extension length. Otherwise, technical clearance is necessary.

$$L_{GV(\max)} = L_{GZ} / 0,6$$



The rated capacity of the fork extension is designed to suit the particular fork, the rated capacity and load centre of the lift truck needs to be checked separately.



Demands of ISO 13284

Please observe:

Fork extensions need to be equipped with locking bolts to prevent slipping off.

These locking bolts have to stand 50 % of the defined test load, i.e. sufficient stability is necessary.



Demands of ISO 13284

Further demands:

- Minimum tolerance between fork extension and the particular fork is 10mm, maximum 10 % play are allowed.
- Fork extension has to comply with all demands of ISO 2330, i.e.

Minimum
1,000,000
with
25 %
overload

Endurance tested
Minimum 1,000,000
stress cycles with 25 %
overload without failures

3:1

Safety factor 3:1
Tested with 300 % of the
rated capacity without
failures



Demands of ISO 13284 / CE certification

- The scope of supply has to include detailed operating instructions



- Type plate needs to be mounted

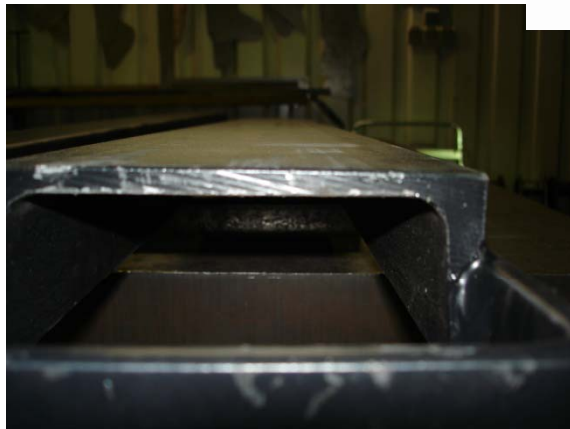
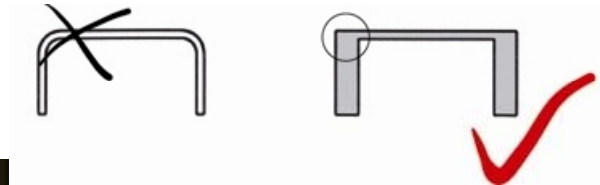


Advantages QualityForkExtensions

Advantage 1:

Solid welded box design (no bent profile)

➔ **Safe and stable positioning onto the fork**

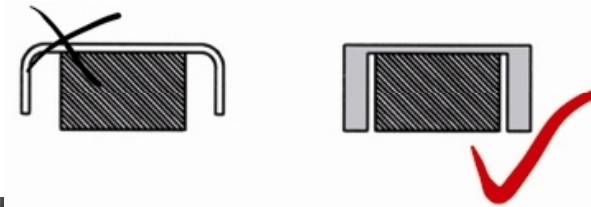


Advantages QualityForkExtensions

Advantage 2:

Individual adaptation to the cross-section of the existing fork

➔ **Tight tolerances, noise reduction and optimized overall dimensions**

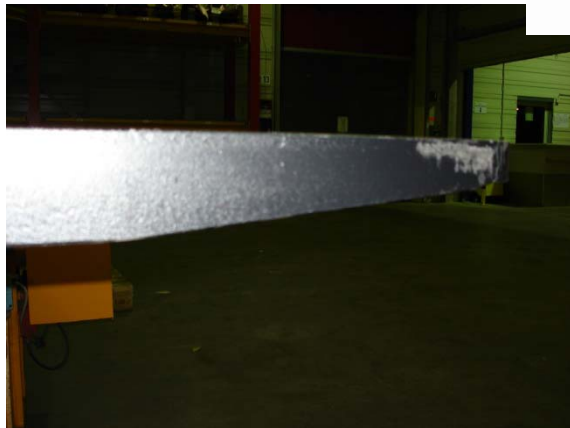
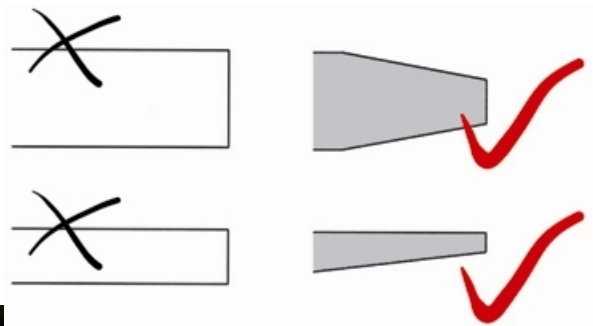


Advantages QualityForkExtensions

Advantage 3:

Tip of the extension tapered and chamfered on the sides and underside

➔ **Rapid and convenient loading of pallets etc.**



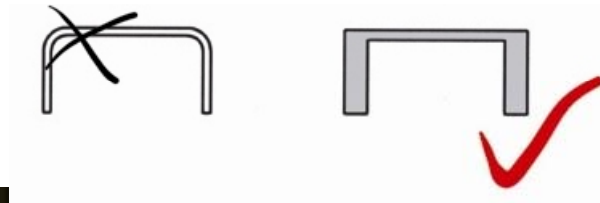
Advantages QualityForkExtensions

Advantage 4:

Made of solid, strong sheet metal.

For static reasons, the lateral sheets are extra thick.

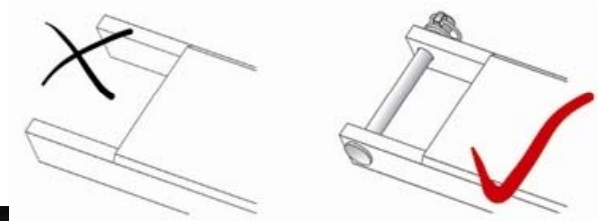
➔ **Maximum strength**



Advantages QualityForkExtensions

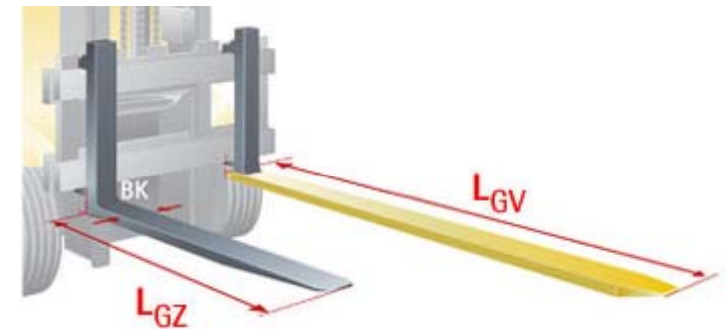
Advantage 5:

In the standard version equipped with locking bolts
➔ to prevent slipping off



Information to be indicated when ordering fork extensions

- Open or closed version?
- Cross-section of the existing fork (width x thickness)?
- Required total length of the extension (L_{GV})?
- Width of the existing fork in the heel section (BK)?
- Blade length of the existing fork (L_{GZ})?



Conclusion

VETTER Quality**Fork**Extensions offer significant advantages in safety, time savings and more efficiency in application!

Do not accept less!

